



Aoudad / *Ammotragus lervia*

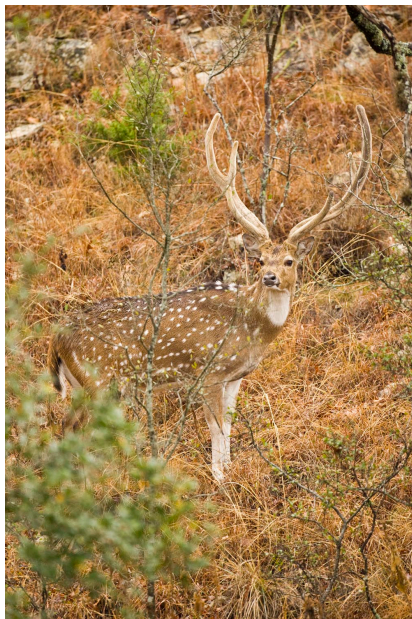
Origin: North Africa

Description: A sandy colored animal that stands highest at the withers and slopes downward to the hip. Both males and females have stiff curved horns that sweep out away from the head and curve back towards the neck.

Horn Size: Typical horn lengths in females from 10" to 20" and from 16" to 38" in males.

Aoudad males with horn lengths greater than 28" are considered to be trophies.

Weight: Male weights range from 150 to 325 pounds and female weights range from 75 to 125 pounds.



Axis / *Axis axis*

Origin: India / Asia

Description: Axis are a medium sized deer, red in color with numerous white spots spread across their bodies. Males have antlers typically consisting of three points per side.

Antler Size: Typical main beam lengths in mature axis range from 24" to 40" with any length above 30" considered to be trophy quality.

Weight: Male weights range from 150 to 250 pounds and female weights from 75 to 150 pounds.



Blackbuck / *Antelope cervicapra*

Origin: India

Description: Blackbuck are relatively small antelope. Color of blackbuck males varies from tan to deep brown or black while females are all tan. Both males and females have white briskets, bellies and rumps, and in addition males have white rings around their eyes. Only males have horns and these are ribbed and

spiral, normally making two to five twists.

Horn Size: Typical mature horn lengths, when measured from base to tip, range from 14" to 22" with some exceptions as long as 24" or 25". Trophy lengths are generally accepted to be those 18" or greater.

Weight: Males can weigh from 55 to 120 pounds while females weight between 35 and 75 pounds.



Black Hawaiian

Origin: Texas

Description: These sheep are average in size and range from dark brown to black in color. Males tend to have short beard like hair that runs from the base of the jaw down to the brisket which is between 2" and 5" in length.

Horn Size: Mature male horn lengths range from 16" to 40" and any length of 28" or greater is widely accepted to represent trophy quality.

Weight: Male weights can range from 75 to 150 pounds while females can weigh anywhere between 60 to 100 pounds.



Catalina / Capra hircus

Origin: Spain

Description: Catalina are medium to large goats that can vary greatly in color. Males commonly have beards from 3" to 5" in length that hang from their chins. Both males and females can have horns. Male horns rise from the skull several inches and then flare outward, away from the body.

Horn Size: Horn lengths can vary from 16" to 50". Lengths of 30" and longer are considered to be trophy lengths.

Weight: Males can vary in weight from 70 to 175 pounds and females can vary from 50 to 100 pounds.



Corsican

Origin: Texas

Description: These sheep are average in size and range from dingy to bright white in color. Males tend to have short beard like hair that runs from the base of the jaw down to the brisket which is between 2" and 5" in length.

Horn Size: Mature male horn lengths range from 16" to 40" and any length of 28" or greater is widely accepted to

represent trophy quality.

Weight: Male weights can range from 75 to 150 pounds while females can weigh anywhere between 60 to 100 pounds.



Dybowski / *Cervus nippon hortulorum*

Origin: Manchuria

Description: Dybowski are the largest of the sika. They are brownish red in color with fluffy white rumps. These deer commonly have faint white spots across much of their body.

Antler Size: Antlers typically have four points to a side. Main beam lengths can range from 24" to 38" with lengths of 30" and greater considered to represent trophy quality.

Weight: Males weigh between 150 and 250 pounds while females weigh between 75 and 150 pounds.



Elk / *Cervus canadensis*

Origin: North America

Description: The Elk, also known as Wapiti, are one of the largest deer. They are red to rusty in color and often have lighter coloration across their rump. Males produce a loud vocalization known as bugling as a part of their mating rituals.

Antler Size: Mature males have large antlers and can have from three to ten or more points per side.

Weight: A full-grown Elk can weigh from between 325 to 1,100 pounds.



Fallow / *Dama dama dama*

Origin: Europe

Description: Fallow deer are of medium build and are seen in three colors. Colors are typically classified as white, spotted or chocolate. The antlers of fallow deer are unique in that they are made up of a main beam that has both points and a palmation

that also has points.

Antler Size: Antler size can vary greatly both in number of points and width of palm. Males with palms in excess of 5" are considered to be of greater quality.

Weight: Males typically weigh between 150 and 250 pounds while females weigh between 50 and 100 pounds.



Four Horn / Ovis aries

Origin: Syria

Description: Four horn are average size sheep that are usually white in color with dabs of red, brown and black spread randomly across their bodies. Horns can be either straight or curved and one pair rises up from the top of the head while the other pair extends from the sides.

Weight: Males weigh between 100 and 175 pounds while females weigh between 75 and 125 pounds.



Gemsbok / Oryx gazella

Origin: South Africa

Description: Gemsbok are large oryx with round ears. Their bodies are tan in color with black and white on their faces, belly and legs. Gemsbok have long, straight horns that are ribbed and typically spread out at the ends.

Horn Size: Horn lengths can vary from 30" to 50" with lengths of 36" and greater being considered trophy quality.

Weight: Male weights range from 375 to 550 pounds and female weights range from 300 to 475 pounds.



Red Deer / Cervus elaphus

Origin: Europe

Description: These deer are large and red in color.

Antler Size: Males typically have at least 5 points per side and can have in excess of twenty points per side.

Weight: Male weights can vary from 300 to 750 pounds while female weights are usually between 150

to 225 pounds.



Sika / *Cervus nippon*

Origin: China / Japan

Description: Sika are a medium sized deer that look squatty due to their thin legs, stout bodies and broad heads. Most commonly these deer are dark shades of brown and have a puffy white rump.

Antler Size: Sika deer have antlers that typically have four points per side. Main beam lengths can vary from 13" to 28", with lengths of 18" or greater commonly being accepted as trophy quality.

Weight: Males typically weigh between 65 and 175 pounds and females weigh between 50 and 100

pounds.



Texas Dall/ *Ovis dalli dalli*

Origin: Texas

Description: These sheep are average in size and range from dingy to bright white in color. Males tend to have short beard like hair that runs from the base of the jaw down to the brisket which is between 2" and 5" in length.

Horn Size: Mature male horn lengths range from 16" to 40" and any length of 28" or greater is widely accepted to represent trophy quality.

Weight: Male weights can range from 75 to 150 pounds while females can weigh anywhere between 60 to 100 pounds.